



---

# *Employing Merchant Vessels for Offshore Presence and Launch of US Military Operations*

LCDR Chavius G. Lewis

Duke University

Federal Executive Fellowship Program

April 17, 2015



# *Agenda*

---

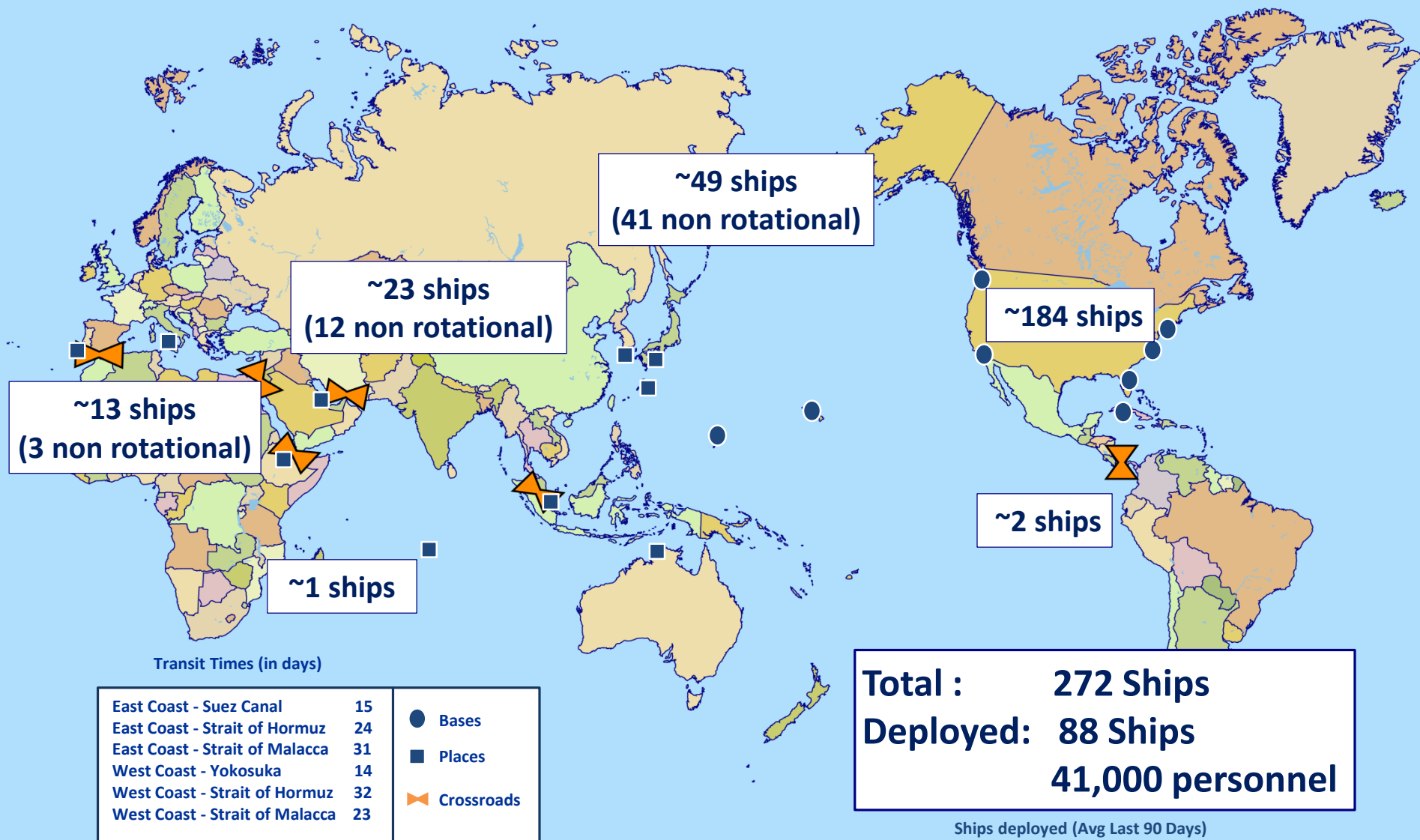
- Purpose
- Historical Trends
- Implementation Obstacles
- Recommendations
- Questions



# *Purpose*

---

- Discuss failure to meet Geographical combatant commander request for naval ships.
- Provide recommendations for use of chartered commercial vessels to relieve stress on traditional grey hull vessels.
- Discuss policy barriers and recommendations for implementation.

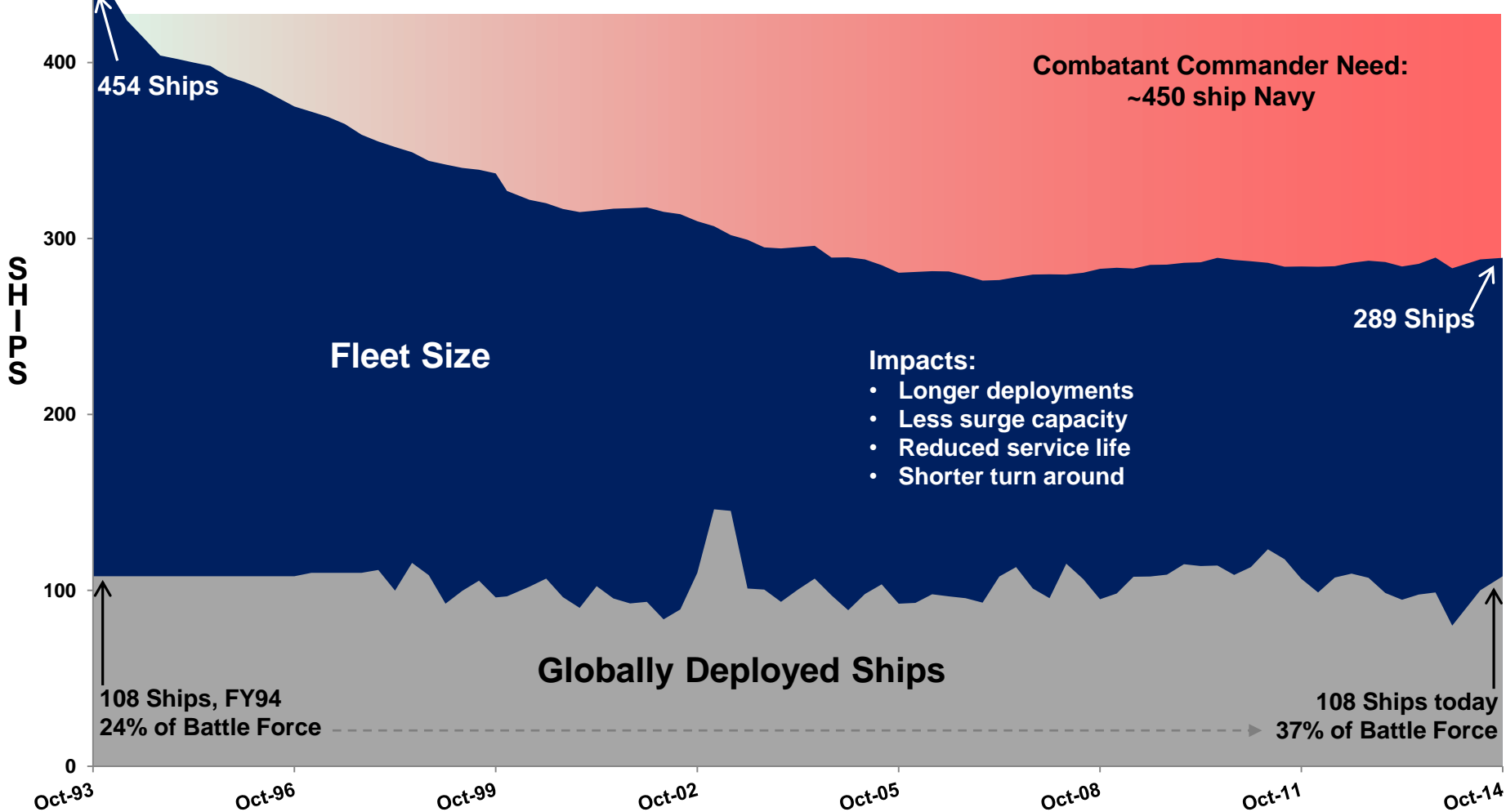


AMERICA'S  
**NAVY**

**OPERATE FORWARD:**  
Strategic Maritime Crossroads



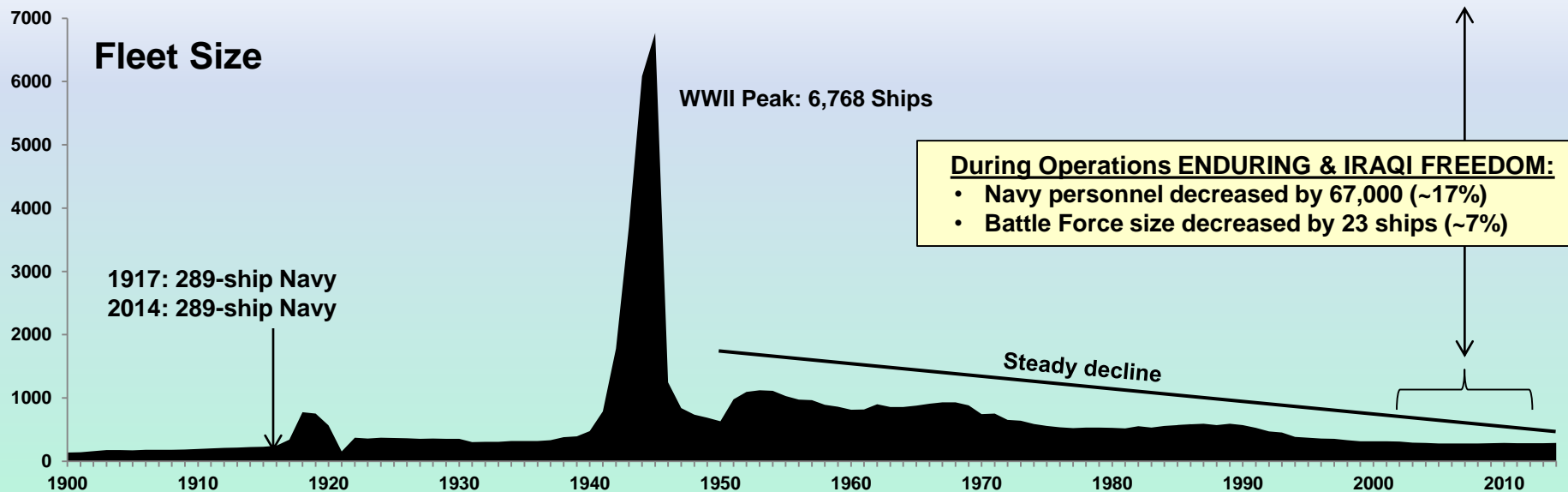
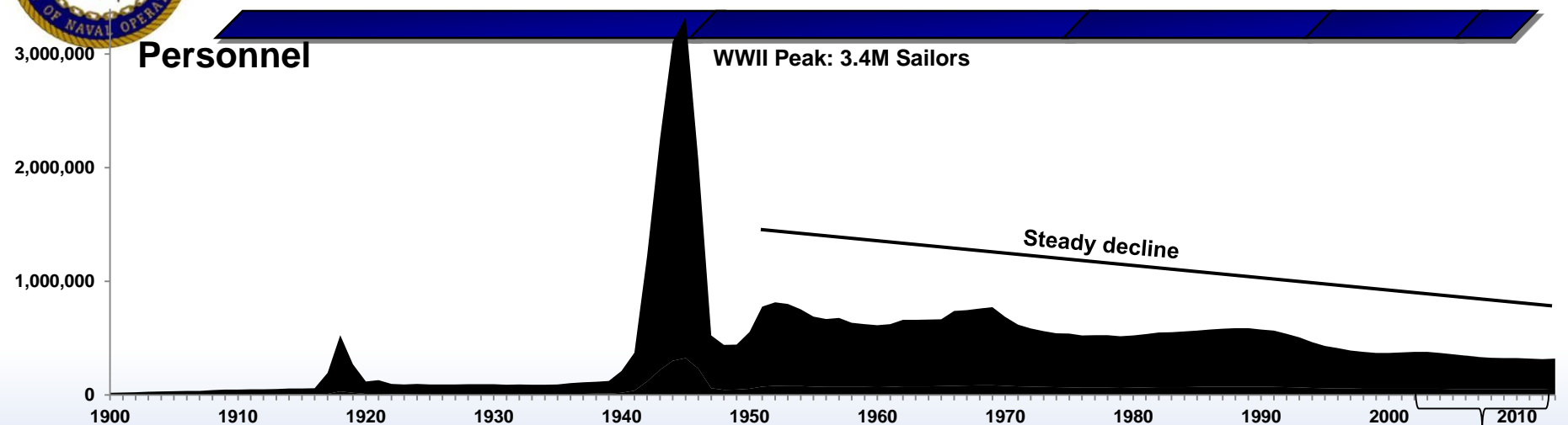
# Supply vs Demand



***Despite Battle Force size, global demand remains high***



# Navy Historical Trends

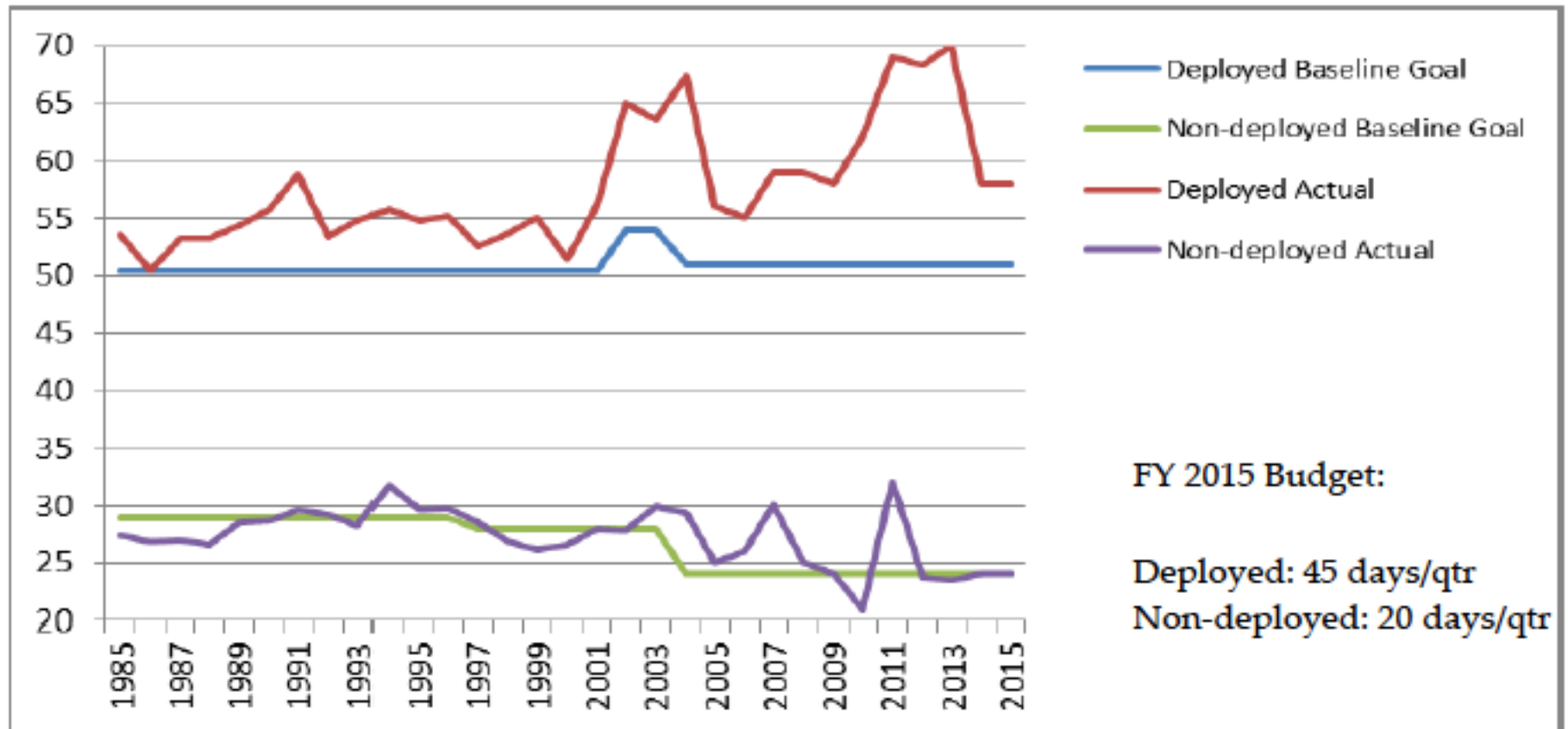


*Unit quality increased over time, but “quantity has a quality of its own”*



# Deployment/Non-Deployment Days

Figure 20 – Active Force Ship OPTEMPO



Source: Department of the Navy Office of Management and Budget



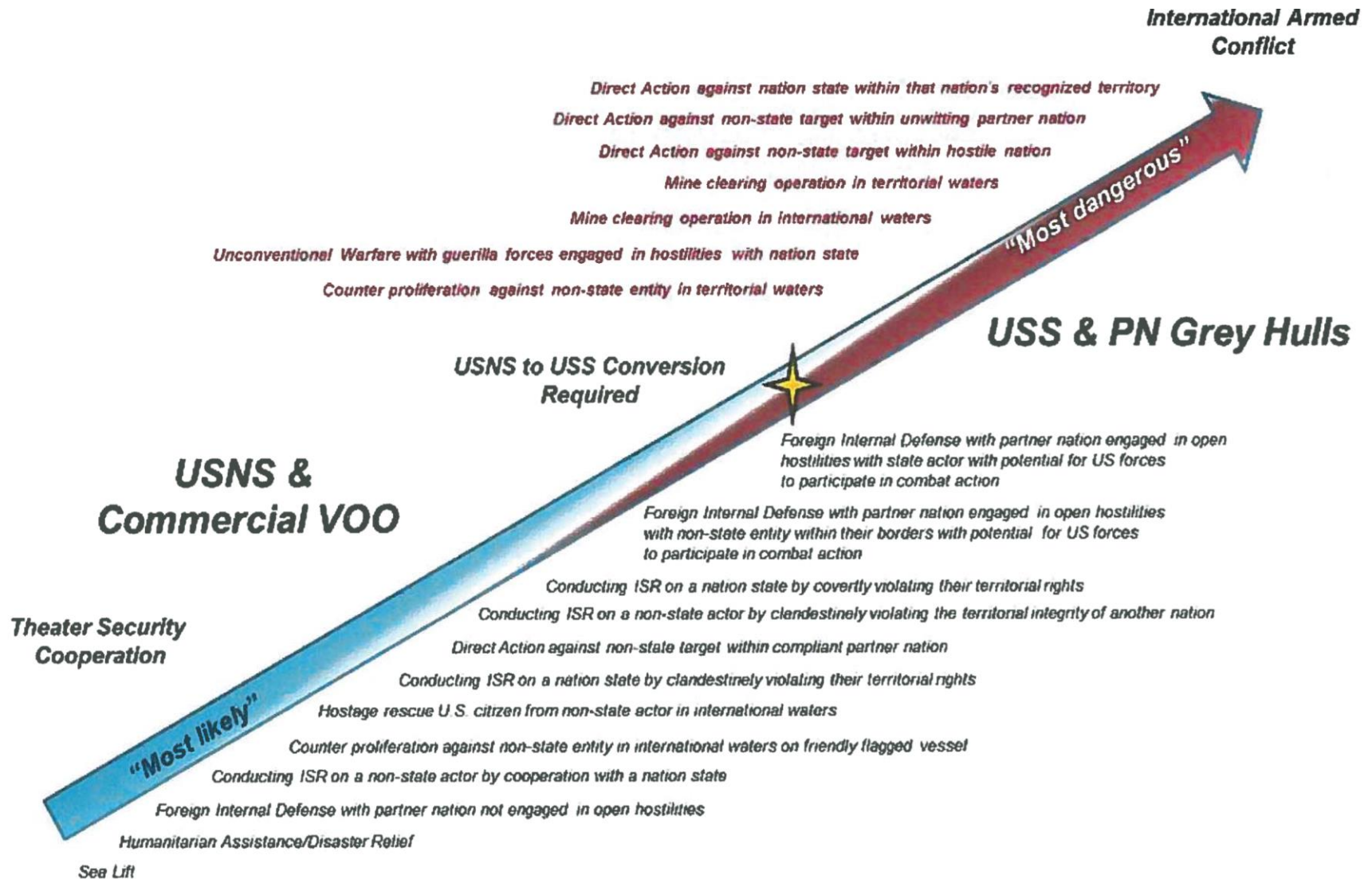
# *Implementation Obstacles*

- Warship Designation Status
  - Required to conduct offensive operations
  - Prone to attacks and counterattacks
  - Commanding Officer required to discipline the crew and civilian mariners under the Uniform Code of Military Justice (UCMJ)
- Civilian Mariners presence onboard
  - Direct participation in hostilities/Operations other than war
  - Geneva Convention rights
- Contract Mariners
  - Military could be subjected to receiving orders from contractors
- Navy Policy
  - Port Visits/Force Protection Requirements
  - Maintenance requirements
  - Rotational Crews
  - Addition of offensive weapons





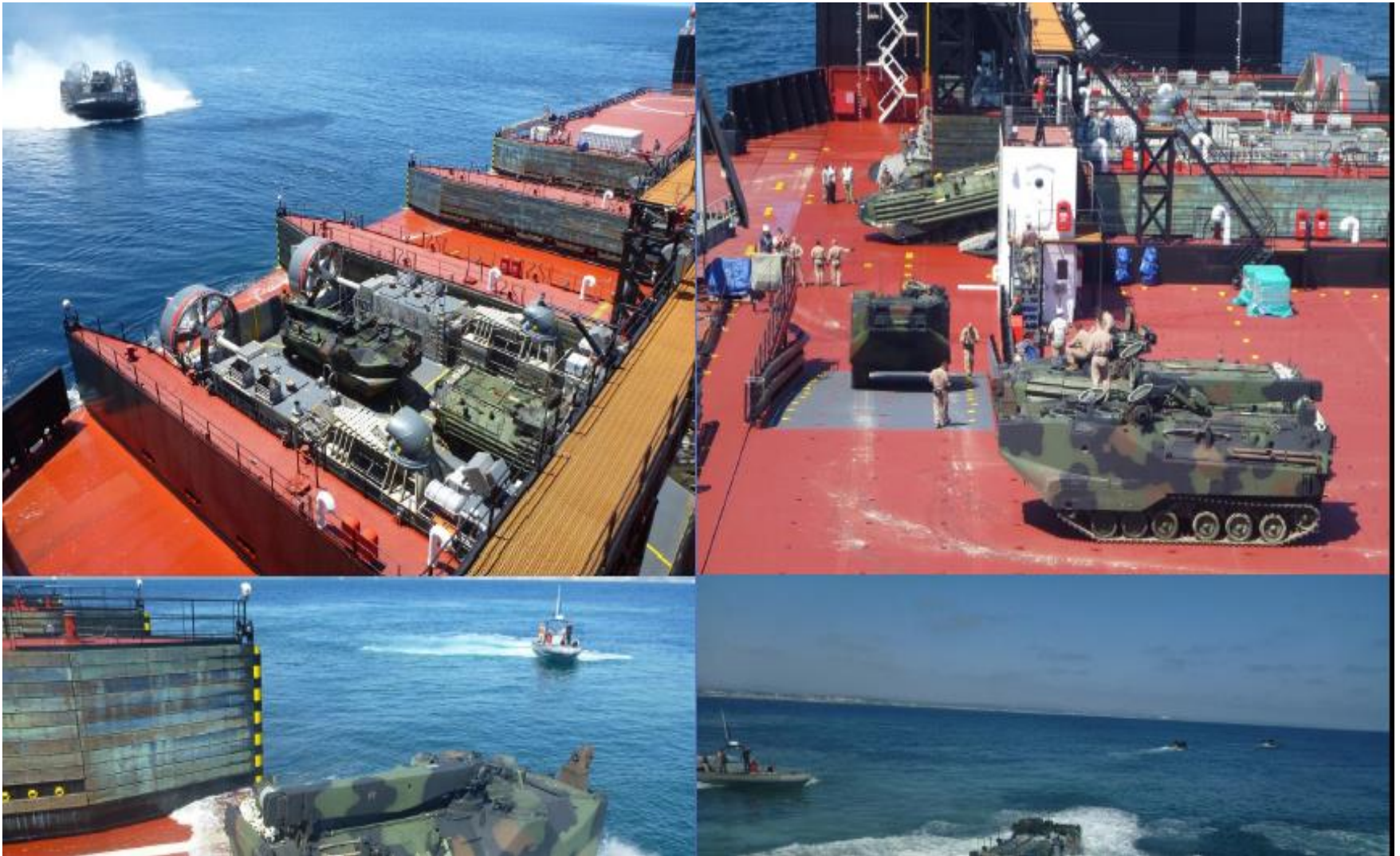
# Blurred Lines





# *Mobile Landing Platform*

## *USNS Montford Point*







# *Mobile Landing Platform and Joint High Speed Vessel Moored*





# ***USNS LEWIS B. PULLER***

## ***AFSB***





# *Electromagnetic Railgun*

**Demo: 2016 on JHSV**

Gun-fired solution for missions currently accomplished by missiles:

- GPS-guided rounds; up to 110 mi range
- *Dramatically shifts cost in our favor:*
  - \$25k per round
  - USN missile >~\$1M
  - Adversary missile ~\$1-7M

**Missions:**

- Anti-air warfare
- Anti-surface warfare
- Extended-range land attack
- Ballistic missile defense
- Cruise missile defense





# *PONCE with LAWS installed*







# *AH-64D APACHE on USS PONCE*







# *Adaptive Force Packages*

## Demonstrated:

- ISR
- Counter Illicit Trafficking (VBSS)
- C2 Afloat



## Planned:

- Mine Counter Measures
- USMC Crisis Response Force Packages
- Maritime Interdiction Operations
- Counter Narcotics
- Rail Gun
- AFSB Operations
- Medical
- Aerostat

## Proposed:

- ISR (Scan Eagle/ Fire Scout)
- UUV/USV Support
- Humanitarian Assistance
- Freedom of Navigation
- ASW
- Modular Schoolhouse (LCS/SSN)
- Counter-piracy
- Sea Basing
- SPMAGTF Crisis Response
- LCAC Maintenance
- SOF Support
  - Special Ops
  - Direct Action
  - Undersea Special Recon
  - Preparation of the Environment
- WMD disposal







# *Special Operations Command's Navy*

## M/V Cragside



## Pros/Cons

- Remain on station for long time periods
- Element of surprise
- Specific design for Special Operators
- Service rivalry
- Require civilian mariners and navy personnel to operate
- No self defense capability



# *Recommendations*

---

- Examine leasing JHSV, MLP, and AFSB
- Utilize Joint High Speed Vessel as transport vessel
- Examine the use of hybrid crews
  - Civilian mariners vs contract mariners
  - Commanding officer vs military detachments
- Integrate vessels into Strike Group Operations
- Reconsider the addition of offensive weapons to these platforms
- Develop force protection concept of operations for Afloat Staging Base



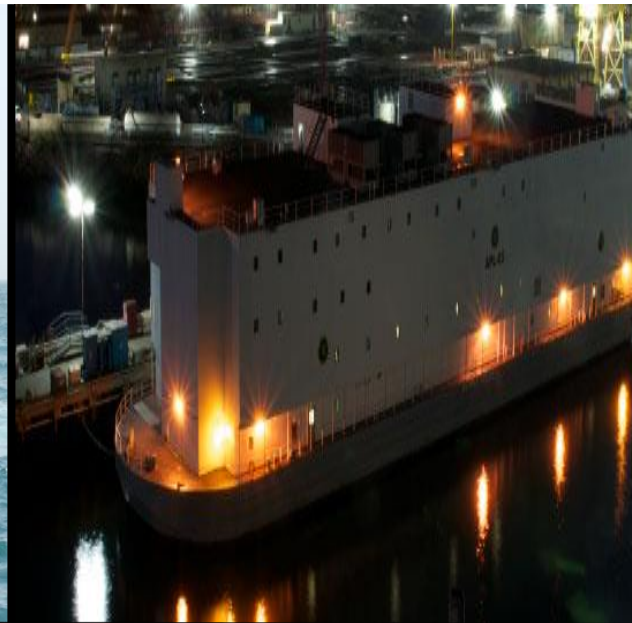
# *AFSB Video*

---

- <https://youtube/Xn5v7tEBYn4>



# *Questions?*



*The World's Most Ready Navy...Held to the Standard*



# *Backup Slides*

---





# *Joint High Speed Vessel (USNS Spearhead)*





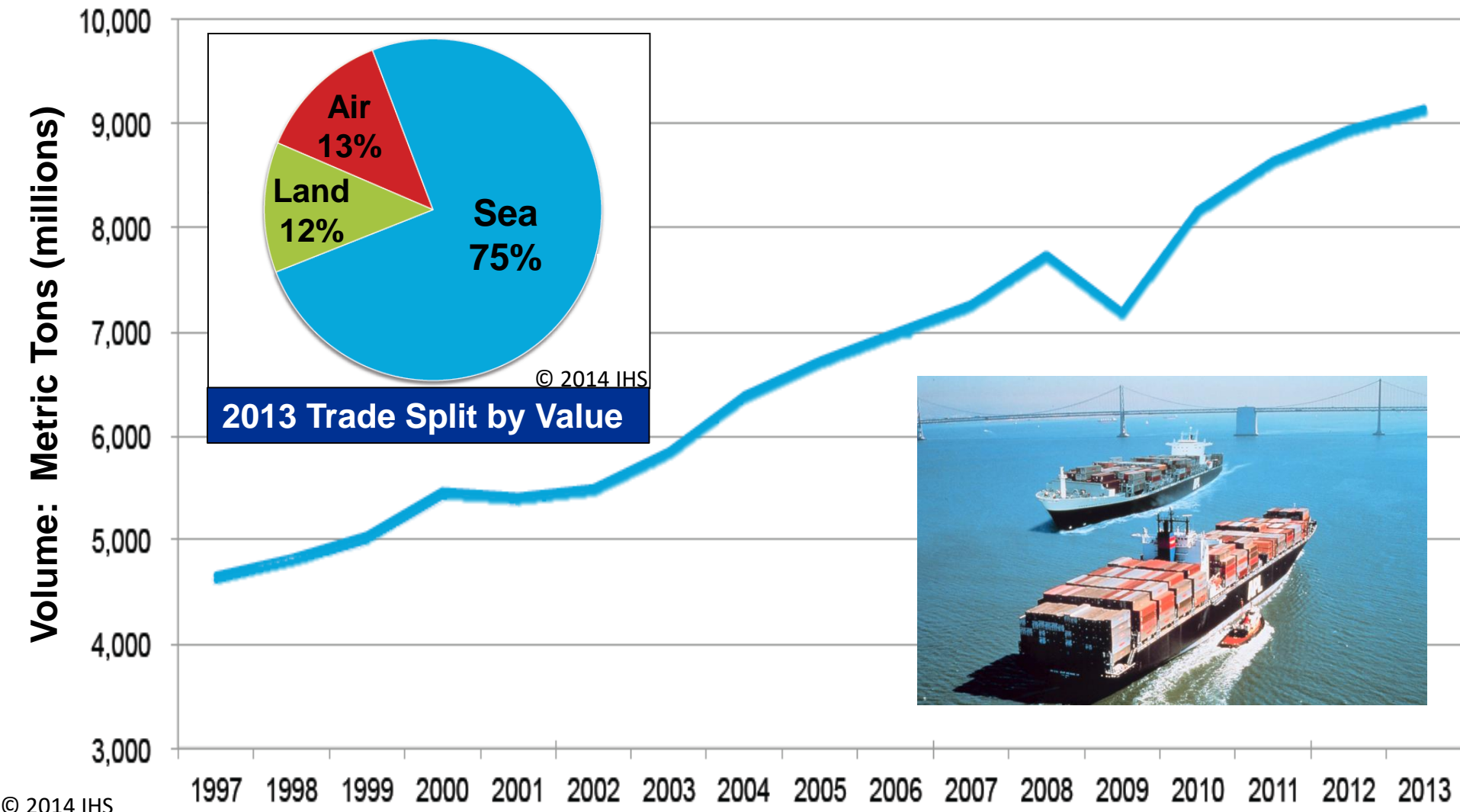


# *Mobile Landing Platform (USNS Montford Point)*





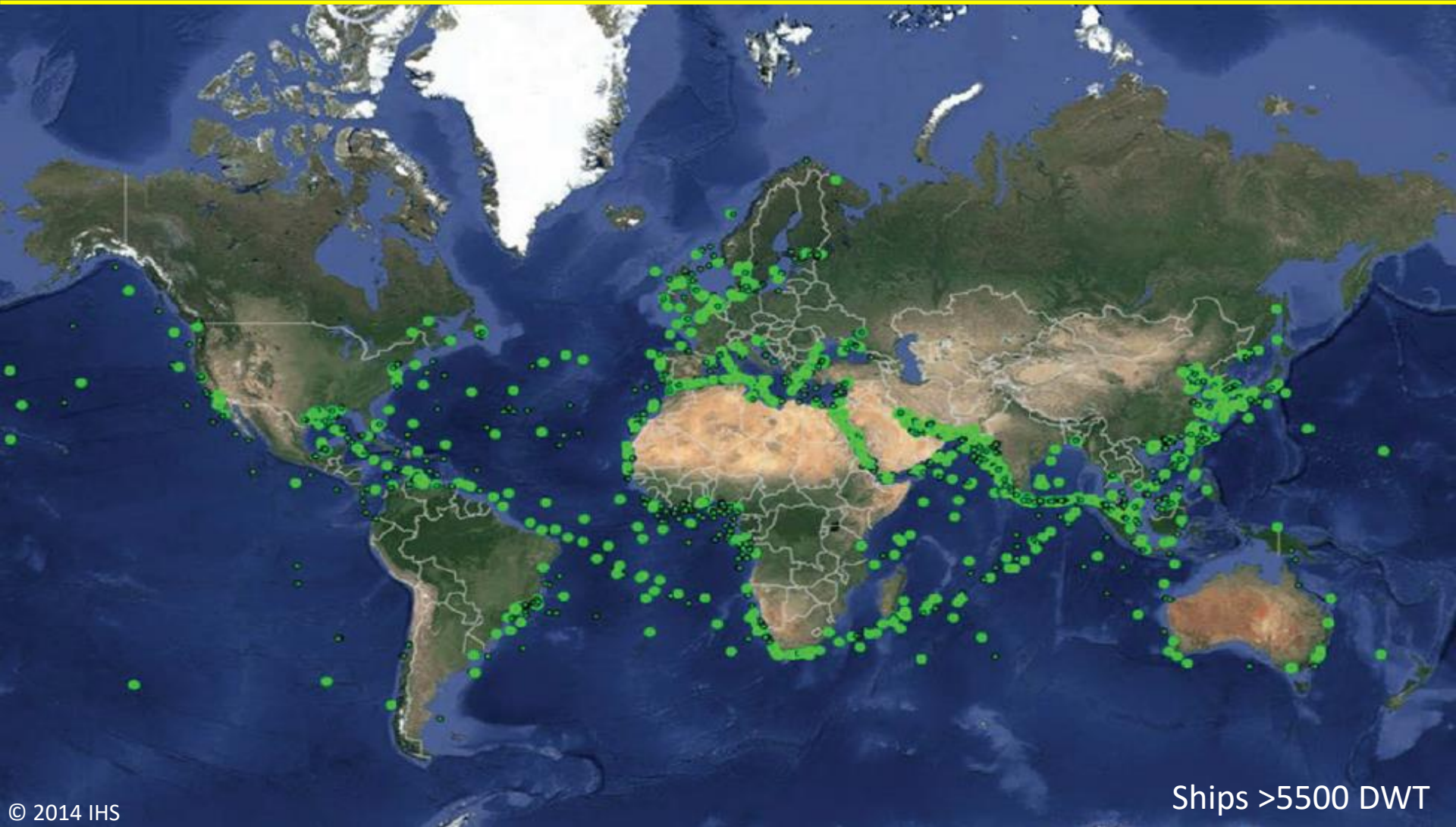
# Seaborne Trade Growth



**Seaborne trade on a steady rise through history.  
Projected to more than double again by 2030.**



# *Location of Crude Oil Carriers on Any Given Day*



**Energy powers world economies. Unimpeded flow is critical to ensuring our collective prosperity and security**



# *Mobile Landing Platform Assessment*



**Alaska Class BP Tanker**



**Base Ship**



**Core  
Capability  
Set**



**Delivered Ship**

**+**

**=**



# Special Mission Ship Operating Costs

- Ships Daily Operating Cost and Contract Period

Ship/Type	Current Daily Rate	Contract Commencement Date	Remaining Options	Next Option Declarable by	Maximum Expiration Date
Contract # Contractor Year Built		Expiration Date Current Period			
SPECIAL MISSION SHIPS					
RESEARCH VESSEL (TIME CHARTERED)					
DOLORES CHQUEST N00033-09-C-2002 Offshore Service Vessels (1978/1989)	\$10,628	1-Oct-09 31-Aug-14	None	N/A	31-Aug-14
DOLORES CHQUEST N00033-14-C-2001 Offshore Service Vessels (1978/1989)	\$13,222.00	9/1/14 8/31/15	2/ 1-year Options	8/31/15	8/31/17
C-CHAMPION N00033-13-C-2001 Offshore Supply Vessels (2000)	\$24,106	11-Nov-12 30-Sep-15	2/ 1-Year Options	30-Sep-15	30-Sep-17
PTV MALAMA N00033-12-C-2005 Hawaii Resource Group	\$2,890	25-Jun-12 30-Sep-15	1/1-Year Option	30-Sep-14	30-Sep-16
M/V C-COMMANDO N00033-10-C-2001 Offshore Service Vessels (1997)	FOS: \$16,031.43 ROS < 10 days: \$16,000 ROS > 10 days: \$14,400	1-Oct-14 30-Nov-14	None	N/A	30-Nov-14
HOS DOMINATOR N00033-11-C-2000 Hornbeck Offshore Services, LLC	FOS: \$22,137.56 ROS: \$22,137.56	31-Jan-11 30-Dec-14	1/ 1-Year Option	5252.217-9806 30-Dec-14 (any time prior to vessel redelivery)	30-Dec-15
M/V KELLIE CHQUEST N00033-12-C-2002 Alpha Marine Services (1996)	\$22,422	29-Jun-12 28-Dec-14	None	N/A	28-Dec-14
HRG RELENTLESS N00033-14-C-2002 Hawaii Resource Group (2000)	\$3,236.00	16-Dec-13 31-Mar-15	7/ 6-month Options 1/ 66-day Option	30-Mar-15	5-Dec-18



# Mobile Landing Platform Contract

- Mobile Landing Platform Contract Costs

Ship/Type	Current Daily Rate	Contract Commencement Date	Remaining Options	Next Option Declarable by	Maximum Expiration Date
Contract # Contractor Year Built		Expiration Date Current Period			
MLP CONTRACT					
USNS MONTFORD POINT	FOS: \$24,284.73 (95% Of POP) ROS-5: \$7,952.04 (5% of POP)	2-Jan-13	1/1-year options, 1 93-day option	30-Sep-15	1-Jan-18
USNS JOHN GLENN	FOS: \$24,284.73 (25% of POP ) ROS-5: \$7,952.04 (75% of POP)	30-Sep-15	1/ 1-year options, 1 93-day option	30-Sep-15	1-Jan-18





# *Navy Ship Count*

*Figure 19 – DoN Battle Force Ships*

	FY 2013	FY 2014	FY 2015
Aircraft Carriers	10	10	10
Fleet Ballistic Missile Sub	14	14	14
Guided Missile (SSGN) Subs	4	4	4
Nuclear Attack Submarines	54	54	54
Surface Combatants	105	99	93
Expeditionary Warfare Ships (Amphibious)	30	31	30
Combat Logistics Ships	32	30	29
Mine Warfare Ships*	13	12	8
Support Ships	23	26	29
Non-Battle Force*	-	-	12
<b>Battle Force Ships</b>	<b>285</b>	<b>280</b>	<b>283</b>

\*Note: Starting in FY 2015 ship count includes eight OCONUS Mine Warfare (MCMs) ships, and twelve Non-Battle Force ships--two Hospital Ships (T-AHs) and ten Forward Deployed Patrol Crafts (PCs)—based on new ship counting rules.